

## Verila LiCa EP 2 VG220 VT

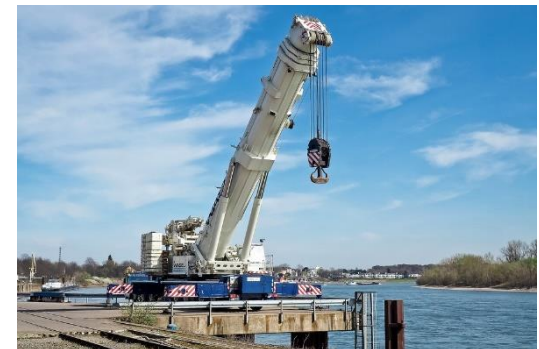
**High Performance · Heavy Duty · Very Tacky · Extreme Pressure · Lithium-Calcium Grease**

**Verila LiCa EP 2 VG220 VT** is high performance lubricating grease intended for the lubrication in heavy duty applications. It is based on mixed lithium-calcium soap thickener system and mineral base oil of ISO VG220 viscosity grade. The grease contains antioxidants, corrosion inhibitors, extreme pressure [EP] and Anti-wear [AW] additives as well as tackiness agent providing that grease stay in place longer.

- Excellent resistance against water wash-out offer extreme protection in the presence of severe water contamination.
- Highly Adhesive grease which stay in place and ensure prolonged re-lubrication intervals.
- Very Good Mechanical Stability prevent softening and leakage.
- Excellent Anti-Wear and High Load Carrying Capacity. Stable lubricating film protect equipment exposed to heavy loads.
- Excellent Rust and Corrosion Protection.



Recommended for lubrication where protection against water wash-out is mandatory, heavy loadings are present, durable and efficient lubrication in wet and dirt environment is requested and prolonged re-greasing intervals are required. Typical application: Heavy-duty vehicles in on-road, off-road, construction and agriculture applications; greasing of chassis, suspension, fifth-wheel, cardan joints, pin-bushings, wheel bearings; Industrial bearings at moderate speed and high loads.



### Technical Data

Grease Classifications		
ISO 6743-9 L-XBCHB 2 · DIN 51502 KP2K-20		
Test Parameter	Test Method	Value
Appearance	Visual	Smooth and Homogenous
Color	Visual	Red
Thickener		Lithium-Calcium
Base Oil Viscosity at 40°C, mm <sup>2</sup> /s	EN ISO 3104	220
NLGI Grade	ASTM D217	2
Operating Temperature Range		-20 to 130 Celsius
Cone Penetration, Worked, 0.1 mm	ISO 2137	265 – 295
Dropping Point	ISO 6299	> 185 Celsius
Rust Test, EMCOR	ISO 11007	0-0
Water Washout Test at 79°C, wt.% loss	ISO 11009	6.5% Typical
Four-Ball EP Test, Weld Point, N	ASTM D2596	4000



While the information and figures given here are typical of current production and compliant with VERILA specification, minor variations may occur